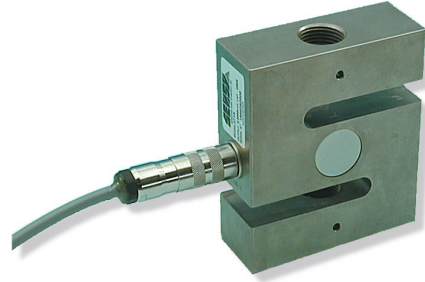


2715

TENSION / COMPRESSION LOAD CELL (STANDARD REFERENCE FORCE TRANSDUCER)

- Wide range capacity : 20 kN (2000 kg) to 200 kN (20 tons)
- Tension and compression
- Easy to install
- Compact design
- Protection IP 67
- EEx ia II C T4/T6 available version for use in hazardous area
- Available in high temperature execution
- Standard reference load cells especially designed to ISO 376 (EN10002/3) version (Class "05" and "00")
- Available in C6 (6000 d) OIML / R 60
- Material : Alloy steel



Model 2715

The SENSY's load cell 2715 is perfectly designed to the following applications :

- Hybrid weighbridges (mechanical conversion)
- Silos, tanks or hoppers weighing
- Suspended reactors or hoppers
- Conveyors belts
- Filling , packaging and batching applications

AVAILABLE CAPACITIES :

2715 : 20 - 30 - 50 - 75 - 100 - (150) - (200) kN

TECHNICAL DATA

Accuracy class		0.1 1000 d	C 1 1000 d OIML	0.05 2000 d	C 2 2000 d OIML	0.03 3000 d	C 3 3000 d OIML	C 6 6000 d OIML
Linearity error	% F.S.	< ± 0.1	< ± 0.03	< ± 0.05	< ± 0.025	< ± 0.025	< ± 0.020	< ± 0.013
Hysteresis error	% F.S.	< ± 0.1	< ± 0.03	< ± 0.05	< ± 0.025	< ± 0.025	< ± 0.020	< ± 0.013
Non - repeatability	% F.S.	< ± 0.03	< ± 0.02	< ± 0.02	< ± 0.01	< ± 0.015	< ± 0.01	< ± 0.01
Creep error over 30 min.	% F.S.	< ± 0.06	< ± 0.04	< ± 0.04	< ± 0.03	< ± 0.025	< ± 0.020	< ± 0.013
Zero shift after loading	% F.S.	< ± 0.015	< ± 0.01	< ± 0.01	< ± 0.0075	< ± 0.0075	< ± 0.005	< ± 0.005
Reference temperature	°C	23	23	23	23	23	23	23
Nominal temperature range	°C	- 10...+ 45	- 10...+ 45	- 10...+ 45	- 10...+ 45	- 10...+ 45	- 10...+ 45	- 10...+ 45
Service temperature range	°C	- 30...+ 70	- 30...+ 70	- 30...+ 70	- 30...+ 70	- 30...+ 70	- 30...+ 70	- 30...+ 70
Storage temperature range	°C	- 50...+ 85	- 50...+ 85	- 50...+ 85	- 50...+ 85	- 50...+ 85	- 50...+ 85	- 50...+ 85
Temperature coefficient of the sensitivity	% /10°C	< ± 0.05	< ± 0.02	< ± 0.035	< ± 0.015	< ± 0.015	< ± 0.009	< ± 0.005
Temperature coefficient of zero signal	% F.S./10°C	< ± 0.035	< ± 0.03	< ± 0.03	< ± 0.02	< ± 0.023	< ± 0.013	< ± 0.01
Nominal sensitivity	mV/V	2	2	2	2	2	2	2
Zero balance	mV/V	± 0.02	± 0.02	± 0.02	± 0.02	± 0.02	± 0.02	± 0.02
Sensitivity tolerance (g=9,8107 m/s ²)	%	< ± 0.3	< ± 0.3	< ± 0.3	< ± 0.1	< ± 0.1	< ± 0.1	< ± 0.05
Input / Output resistance	Ohm	351 ± 2	351 ± 2	351 ± 2	351 ± 2	351 ± 2	351 ± 2	351 ± 2
Insulation resistance (50V)	MOhm	> 5000	> 5000	> 5000	> 5000	> 5000	> 5000	> 5000
Nominal excitation voltage	V	5 to 10	5 to 10	5 to 10	5 to 10	5 to 10	5 to 10	10
Nominal range of the excitation voltage	V	2...15	2...15	2...15	2...15	2...15	2...15	2...15
Safe load limit	% F.S.	150	150	150	150	150	150	150
Breaking load	% F.S.	> 300	> 300	> 300	> 300	> 300	> 300	> 300
Static lateral force limit	% F.S.							
Permissible dynamic loading	% F.S.	50	50	50	50	50	50	50

F.S.: full scale Specifications subject to change without notice

LOAD CELL

model 2715 alloy steel

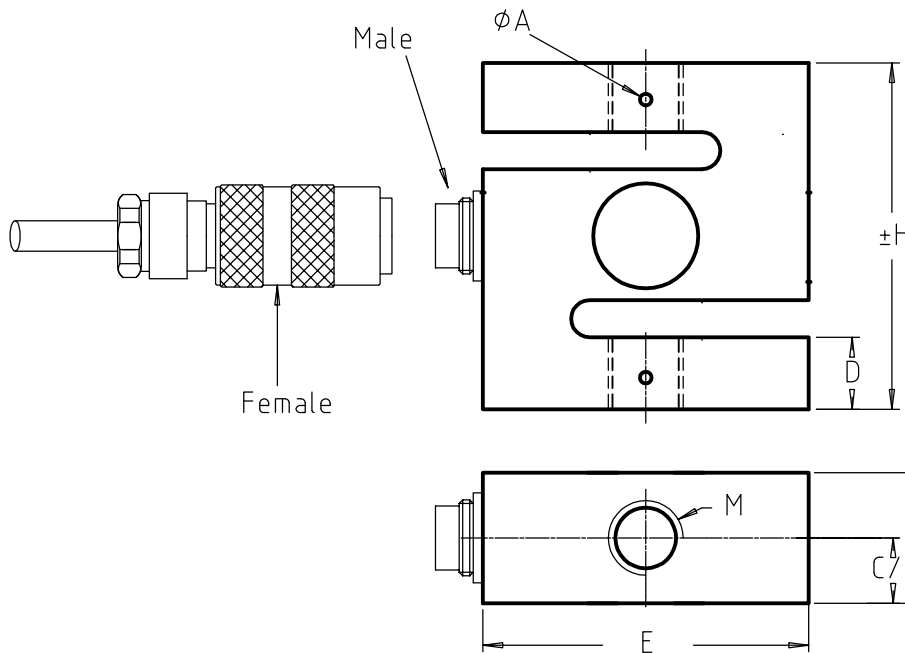
TENSION-COMPRESSION

Range (20 - 200 kN) IP67
(2 - 20 t.)

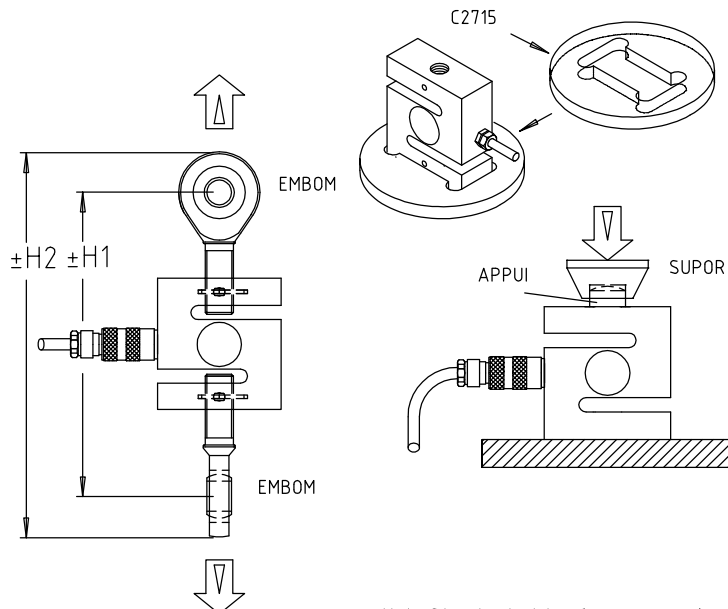
Cable length : See table



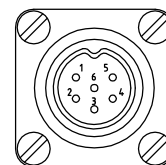
EN 10002



CAPACITIES	ϕA	H	C	D	E	M	H1	H2	Cable	Weight	Max.deflexion
20-50 kN	4	116	38	30	98	M24x2	238	302	3 m	2.6 kg	0.35 mm
75-100 kN	6	130	56	33	118	M36x3	318	402	6 m	5.2 kg	0.60 mm
150-200 kN	8	155	67	45	146	M45x3	360	470	10 m	9 kg	0.70 mm



FEMALE-MALE CONNECTOR DIN 45322



- CONTACT N°
- 1 Excitation - Yellow
 - 2 Output + Green
 - 3 Output - White
 - 4 Excitation + Brown
 - 5 Sense - Grey
 - 6 Sense + Pink

Shield not connected to transducer

Note: Standard wiring for compression