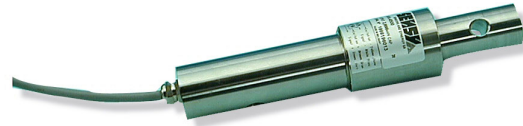


# 4500

# SHEAR BEAM LOAD CELL

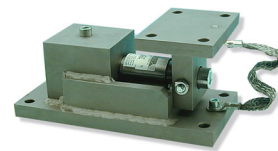
- Cost effective solution
- Sturdy design
- Protection IP 67
- Available in 0.1 % (1000 d)
- Stainless steel
- Easy to install
- High resistance against shocks
- Whole range of mounting kits available
- "EEx" ia II C T4/T6 version available for use in hazardous area



Model 4500 - 5 t

The SENSY's load cell 4500 is perfectly designed to the following applications :

- Silos and tanks weighing
- Reactors or hoppers weighing
- Mixers (vibrating)
- Available in special version for hoisting and crane's security



4500 + 14500

### AVAILABLE CAPACITIES :

**4500 : (0.5) - (0.75) - 1 - (1.5) - 2 - 3 - 5 - 7.5 - (10) - (15) - (20) - (30) - (50) tons**

TECHNICAL DATA		
Accuracy class		0.1 1000 d
Linearity error	% F.S.	< ± 0.1
Hysteresis error	% F.S.	< ± 0.1
Non - repeatability	% F.S.	< ± 0.03
Creep error over 30 min.	% F.S.	< ± 0.06
Zero shift after loading	% F.S.	< ± 0.015
Reference temperature	°C	23
Nominal temperature range	°C	- 10...+ 45
Service temperature range	°C	- 30...+ 70
Storage temperature range	°C	- 50...+ 85
Temperature coefficient of the sensitivity	% /10°C	< ± 0.05
Temperature coefficient of zero signal	% F.S./10°C	< ± 0.035
Nominal sensitivity	mV/V	2
Zero balance	mV/V	± 0.02
Sensitivity tolerance (g=9,8107 m/s <sup>2</sup> )	%	< ± 0.3
Input / Output resistance	Ohm	351 ± 2
Insulation resistance (50V)	MOhm	> 5000
Nominal excitation voltage	V	5 to 10
Nominal range of the excitation voltage	V	2...15
Safe load limit	% F.S.	150
Breaking load	% F.S.	> 300
Static lateral force limit	% F.S.	100
Permissible dynamic loading	% F.S.	50

F.S.: full scale Specifications subject to change without notice

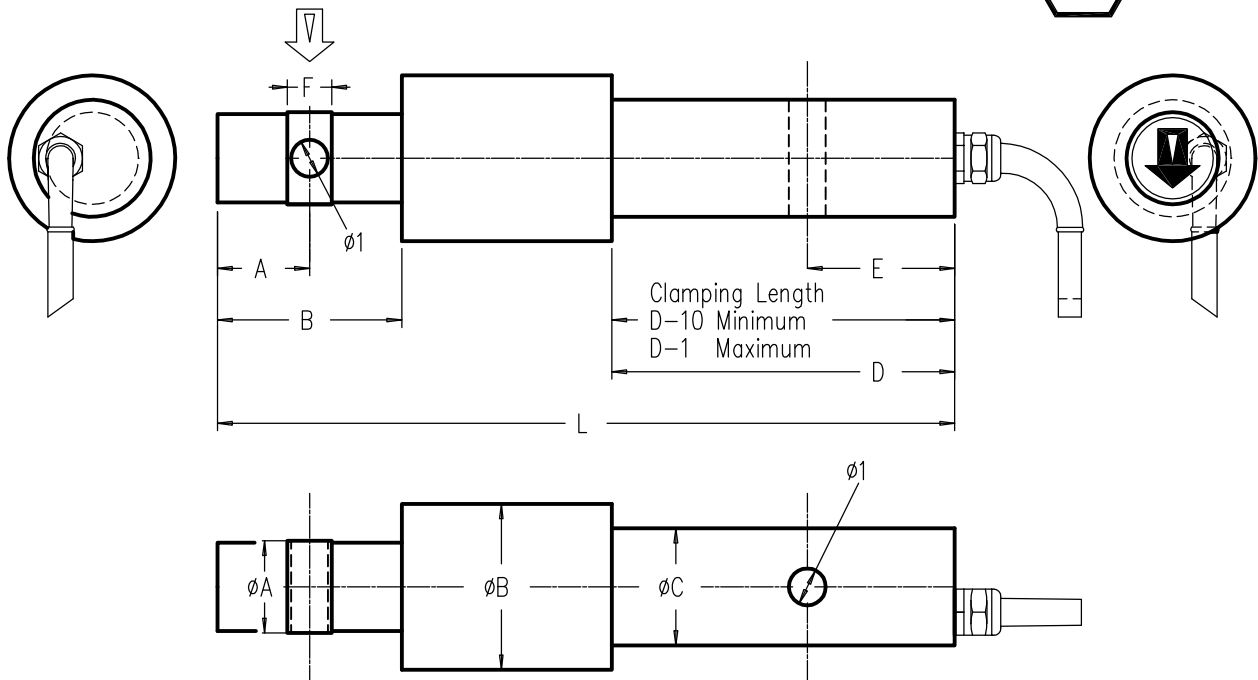
# LOAD CELLS

model 4500 stainless steel

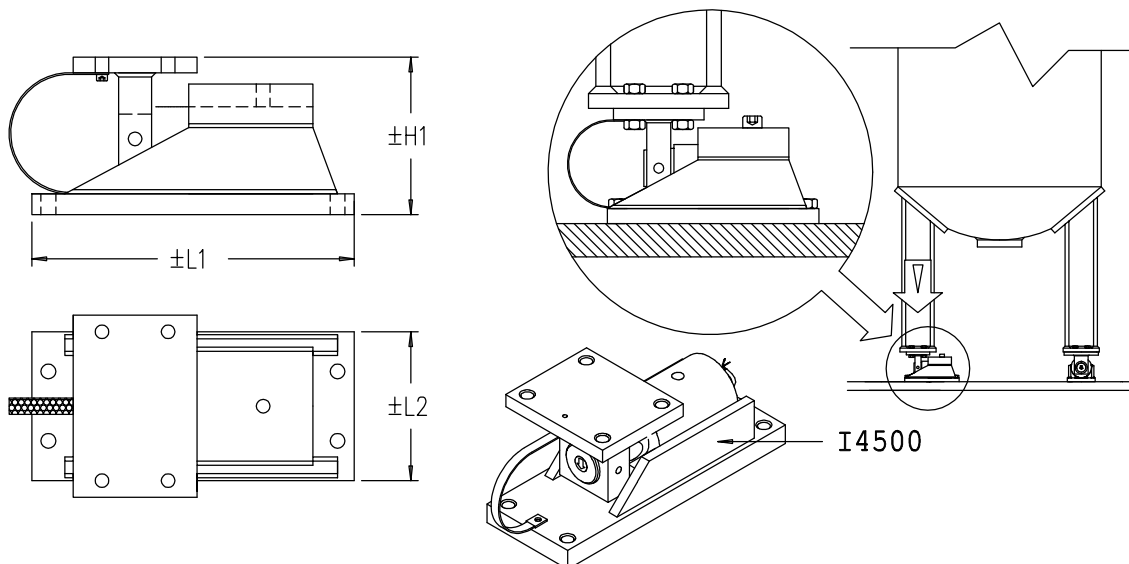


## EASY MOUNTING SHEAR-BEAM

Range 0.5–50 t. IP67  
Cable length : see table (CL)



CAPACITIES	A	B	D	E	F	L	$\phi 1$	$\phi A$	$\phi B$ (MAX)	$\phi C$	CL	H1	L1	L2	Weight
0.5 - 3 t.	25	50	93	40	8	200	10	$25 \pm 0.1$	40	$31.75 \pm 0.1$	6 m	125	285	120	1.48 kg.
5 - 7.5 t.					$40 \begin{smallmatrix} 0 \\ -0.15 \end{smallmatrix}$			$49 \begin{smallmatrix} 0 \\ -0.15 \end{smallmatrix}$	3 kg.						
10 - 15 t.	25	50	105	20	24	240	16	$60 \begin{smallmatrix} 0 \\ -0.15 \end{smallmatrix}$	62	$62 \begin{smallmatrix} 0 \\ -0.15 \end{smallmatrix}$	12 m	174	405	150	3.4 kg.
20 t.					$78 \begin{smallmatrix} 0 \\ -0.15 \end{smallmatrix}$					4.3 kg.					
30t.					$78 \begin{smallmatrix} 0 \\ -0.15 \end{smallmatrix}$					8 kg.					
50t.	30	60	180	70	40	280	20	$88 \begin{smallmatrix} 0 \\ -0.20 \end{smallmatrix}$			20 m	$\pm 230$	$\pm 500$	240	13 kg.



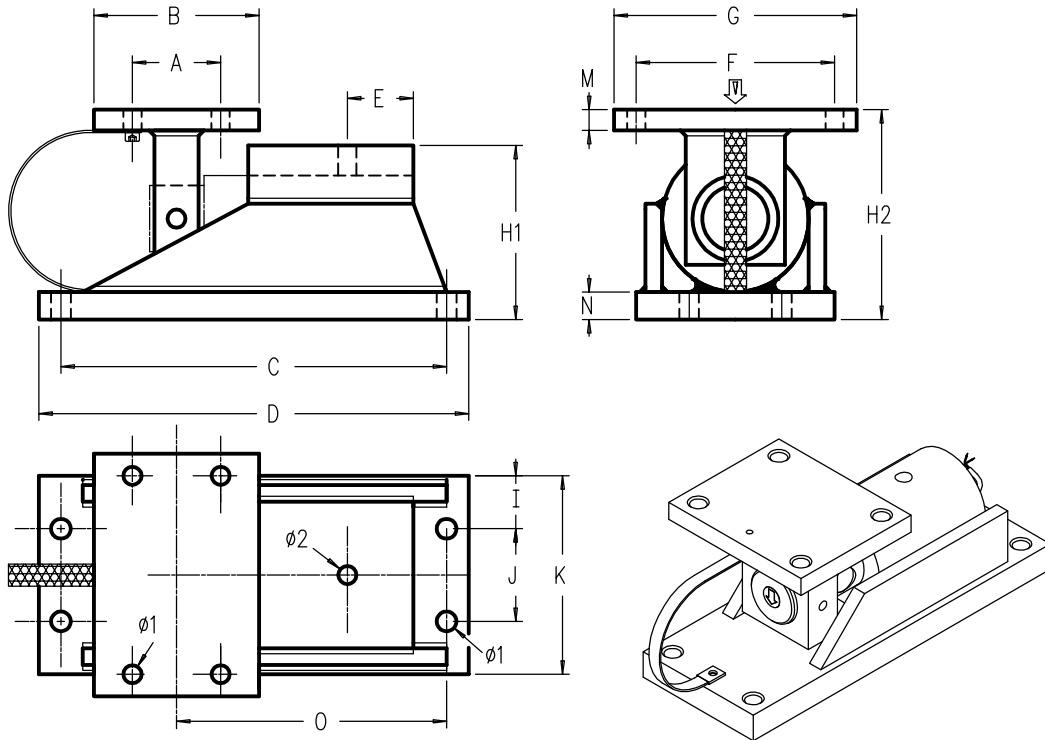
Rev.06/09/98C

## ACCESSORIES

model I4500 stainless steel  
 model I4505 coated steel

### EASY MOUNT MODEL 4500

Range 0.5 - 30 t



MODEL	CAPACITIES	A	B	C	D	E	F	G	I	J	K	M	N	O	φ1	φ2	H1	H2	Weight ( kg. )
I4500 I4505	0.5 - 3 t.	60	90	255	285	40	90	120	15	90	120	15	20	200	12.5	10.5	100	125	10.6 (I4505 Ni plated)
	5 - 7.5 t.																		11.2 (I4505 Ni plated)
	10 - 20 t.	110	150	365	405	60	140	180	20	110	150	20	30	260	17	16.5	134	174	23.5 (I4505 painted)
	30 t.			407	450		157	200	21.5	157	200	30		273.5	21.5		160	206.5	48 (I4505 painted)

