

# 5300

# STANDARD LOAD PIN

- Double shear beam axle
- Sturdy design
- Stainless steel
- Easy to install
- Protection IP 65 (IP 67 available)
- A complete range of electronics, load limiters and displays are also offered "CE" certified
- "EEx" ia II C T4/T6 version available
- Range capacities 0,5 - 50 t
- Available with integrated amplifier 4-20mA or 1-5 VDC



Model 5300 – 500 kg

The SENSY's load pin 5300 is perfectly designed to the following applications :

- Cranes pulley equipment
- Hoisting and crane's security in combination with a load limiter (BRIDGEBOY, CRANEBOY, ...)
- Equipment of shackles and hydraulic jacks...
- Force measurement on cylinders and others applications

### AVAILABLE CAPACITIES :

**5300 : 0.5 - 1 - 2 - 3 - 5 - 10 - 20 - 30 - 50 tons**

TECHNICAL DATA		
Accuracy class		SL
Combined error	% F.S.	1
Non - repeatability	% F.S.	< ± 0.25
Creep error over 30 min.	% F.S.	< ± 0.2
Zero shift after loading	% F.S.	< ± 0,05
Reference temperature	°C	23
Nominal temperature range	°C	- 10...+ 45
Service temperature range	°C	- 30...+ 70
Storage temperature range	°C	- 50...+ 85
Temperature coefficient of the sensitivity	% /10°C	< ± 0.1
Temperature coefficient of zero signal	% F.S./10°C	< ± 0.1
Nominal sensitivity	mV/V	± 1
Zero balance	mV/V	± 0.02
Sensitivity tolerance (g=9,8107 m/s <sup>2</sup> )	%	< ± 0.5
Input / Output resistance	Ohm	350 ± 20
Insulation resistance (50V)	MOhm	> 5000
Nominal excitation voltage	V	5 to 10
Nominal excitation voltage	V	2...15
Safe load limit	% F.S.	200
Breaking load	% F.S.	>500
Static lateral force limit	% F.S.	> 300
Permissible dynamic loading	% F.S.	70

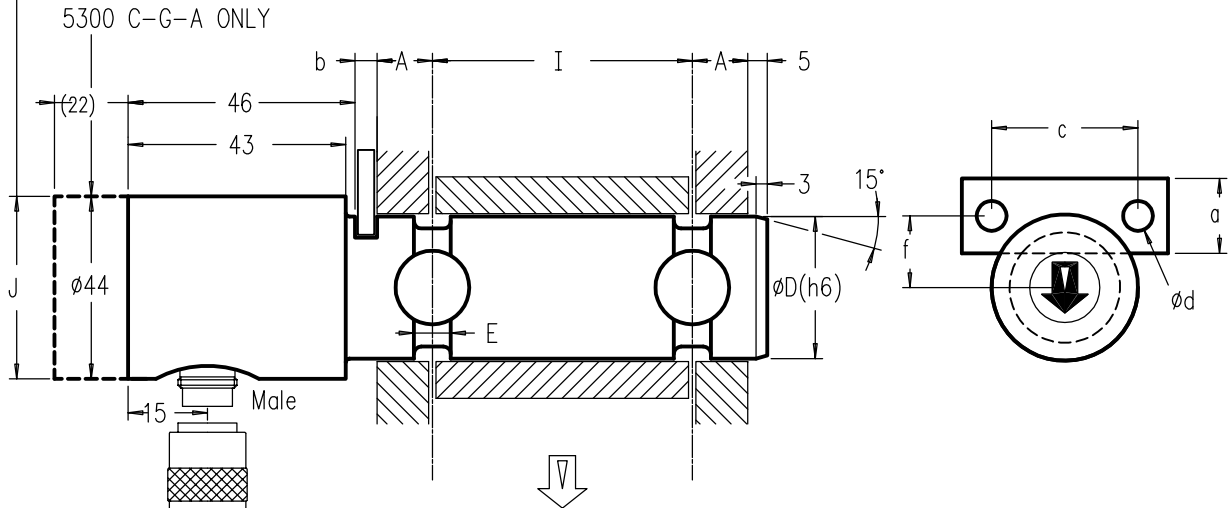
F.S.: full scale Specifications subject to change without notice

## LOAD CELL

**C E** (Hoisting)

J=∅44 if ∅D≤44  
J=∅D if ∅D>44

**model 5300** stainless steel  
Range 0.5–50t IP65  
**DOUBLE SHEAR BEAM AXLE**  
Cable length: 6m



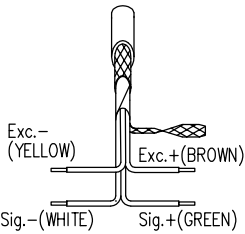
Female

Option: 5300t  
(1 – 5 V)  
or 5300J  
(4–20mA 3 Wires)

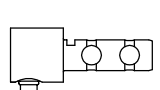
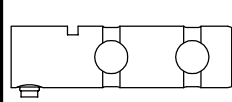
Option: 5300C  
(4.5–20mA  
2 Wires)

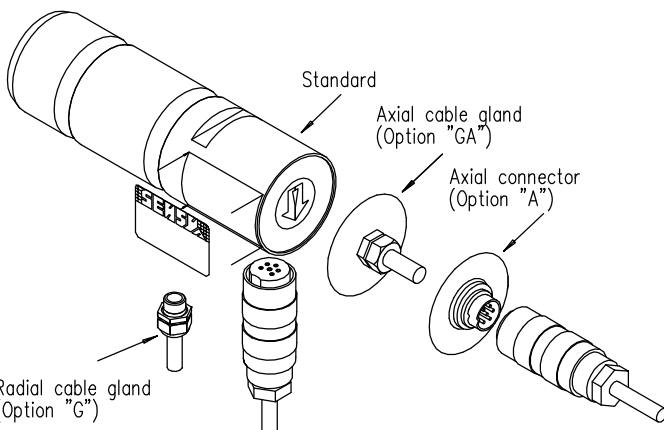
Common(YELLOW) Exc.+(BROWN)  
Sig.+(GREEN)

Exc.-(YELLOW) Exc.+(BROWN)

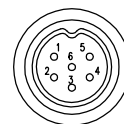


Standard cable  
4x0.34 mm/2

STANDARD DESIGN	CAP.(t.)	∅D	A	E	I	a	b	c	∅d	f								
	0.5	25	13.5	8	31	25	6.5	50	11	20.5								
	1									24								
	2									24								
	3	35	18	10	47					24								
	5	50	27	14	66	30	8.5	70	13	33								
	10									38								
	20									65	32.5	18	90					47
	30									75	40		100	40	10.5	100	17	47
	50									85	49	20	117					50.5



### FEMALE-MALE CONNECTOR DIN 45322



CONTACT N°

1 Excitation - Yellow  
2 Signal + Green  
3 Signal - White  
4 Excitation + Brown  
5 Sense - Grey  
6 Sense + Pink

Standard cable

Cable screen not connected to transducer  
Option f : Cable screen connected to transducer  
(6 wires cable in option)

Cable screen connected to transducer for option t,C,J

Rev.01/09/99B