

## 6100-6105

## REACTION TORQUE METER

- Universal non - rotating torque meter
- Broad range of capacities : from 300 to 5000 Nm
- Easy to install
- Compact design
- Protection IP 65
- EEx ia IIC T4 / T6 version certified for use in explosive areas
- Available in version High temperature
- Available in high output signal
- Available with double Wheatstone bridge
- Material : Stainless (6100) or nickel plated steel (6105)



Model 6100 – 500 Nm

Model 6100 and 6105 from SENSY are designed for following applications:

- Torque measurement on machines
- Servo control or torque limitation on industrial process
- Calibration of screw drivers
- Torque measurement in laboratories

### AVAILABLE CAPACITIES :

**6100 - 6105 : 300 - 500 - 1000 - 2000 - 5000 Nm**

Technical characteristics		
Accuracy class		0.25
Linearity error	% F.S.	< ± 0.25
Non-repeatability	% F.S.	< ± 0.1
Creep error over 30 min.	% F.S.	< ± 0.075
Return to Zero	% F.S.	< ± 0,025
Reference temperature	°C	23
Nominal temperature range	°C	- 10...+ 45
Service temperature range	°C	- 30...+ 70
Storage temperature range	°C	- 50...+ 85
Temperature coefficient of the sensitivity	% /10°C	< ± 0.05
Temperature coefficient of the Zero signal	% F.S./10°C	< ± 0.035
Nominal sensitivity	mV/V	1 - 1.5
Zero balance	mV/V	± 0.02
Sensitivity tolerance	%	< ± 0.2
Input/Output resistance	Ohm	350 ± 20
Insulation resistance	MOhm	> 5000
Nominal excitation voltage	V	5 to 10
Nominal range of excitation voltage	V	2...15
Safe load limit	% F.S.	150
Breaking load	% F.S.	300
Permissible dynamic loading	% F.S.	50

F.S.: full scale Specifications subject to change without notice

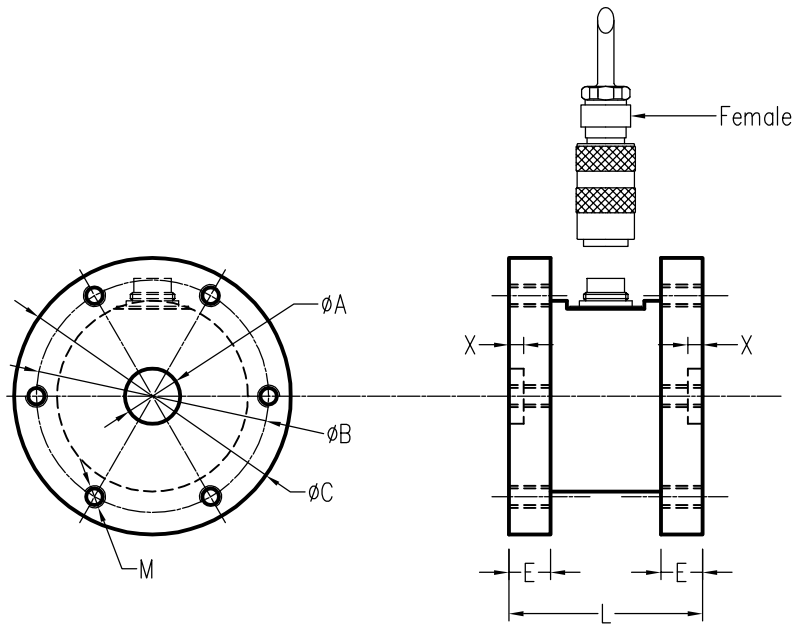
## STATIC TORQUEMETER

model 6100      stainless steel  
 model 6105      alloy steel

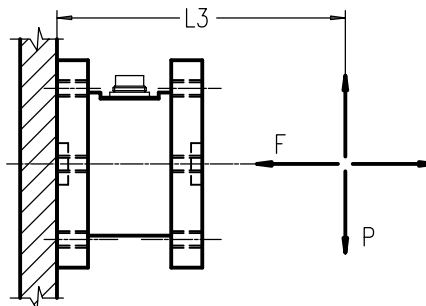
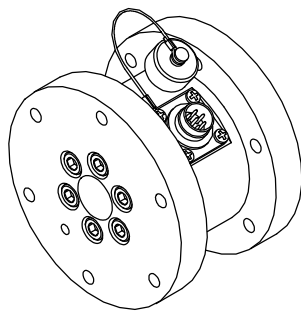
## REACTION TORQUE TRANSDUCER

Range : 300 – 5000 Nm 1mV/V IP 65

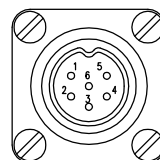
Cable length : 3 m



CAPACITIES	$\phi A$	$\phi B$	$\phi C$	E	L	M	X	F max (kN)	L3xP max (N/m)	Torsional stiffness kNm/rad
300 – 500 Nm	20 H7	84	99	15	70	M8 ( 6 x 60' )	10	7-12	80-170	170-215
1000 – 2000 – 5000 Nm	20 H7	127	149	18	100	M12 ( 8 x 45' )	15	18-35-55	330-700-1300	220-600-1300



### FEMALE-MALE CONNECTOR DIN 45322



- CONTACT N°
- 1 Excitation - Yellow
  - 2 Signal + Green
  - 3 Signal - White
  - 4 Excitation + Brown
  - 5 Calibration - Grey
  - 6 Calibration + Pink

Standard : Cable screen not connected to transducer  
 Option f : Cable screen connected to transducer